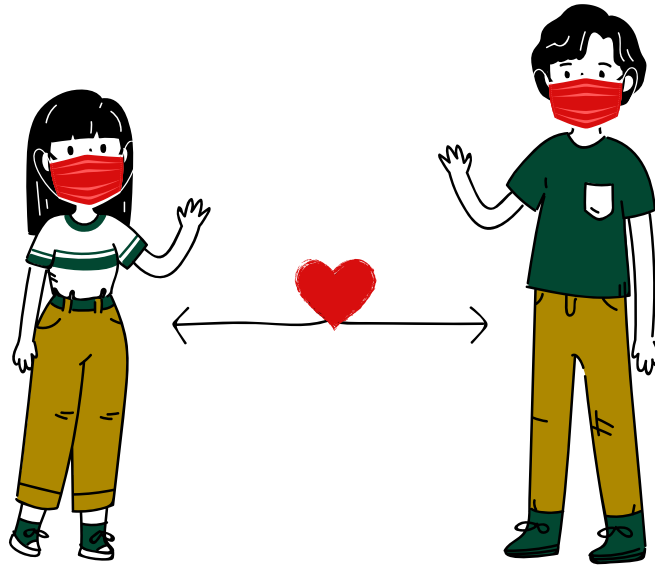


Visitor Updates For Residents



Before you embrace, Cover your face!

CMS and the CDC recommend that long term care residents and their visitors (even when fully vaccinated) continue to adhere to the core principles of COVID-19 infection, including:

- **Physical Distancing (maintaining 6 feet)**
- **Masking**
- **Hand Hygiene**

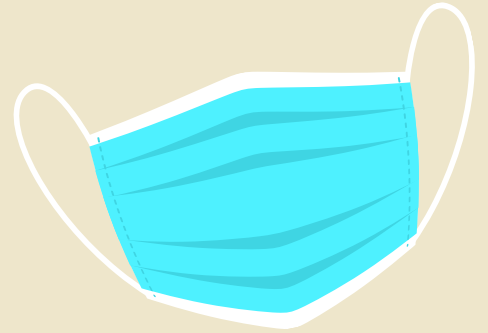
This continues to be the safest way to prevent the spread of COVID-19, particularly if either party has not been fully vaccinated. However, we acknowledge the toll isolation and separation has taken on you and your loved ones.

Therefore, **if the resident is fully vaccinated, they can choose to have close contact (including touch) with their visitor while wearing a well-fitting face mask and performing hand hygiene before and after.**

Mask Updates for Co-Workers

VACCINATED

- **May wear an isolation/procedural mask or KN95/N95 mask while working.**
- **Must wear an N95 or KN95 when working with a COVID positive resident.**
- **Eye protection not required unless working with a positive resident.**



NOT VACCINATED

- **Must wear N95 or KN95 at all times.**
- **Must wear eye protection at all times**
 - **(Face shield or goggles)**

